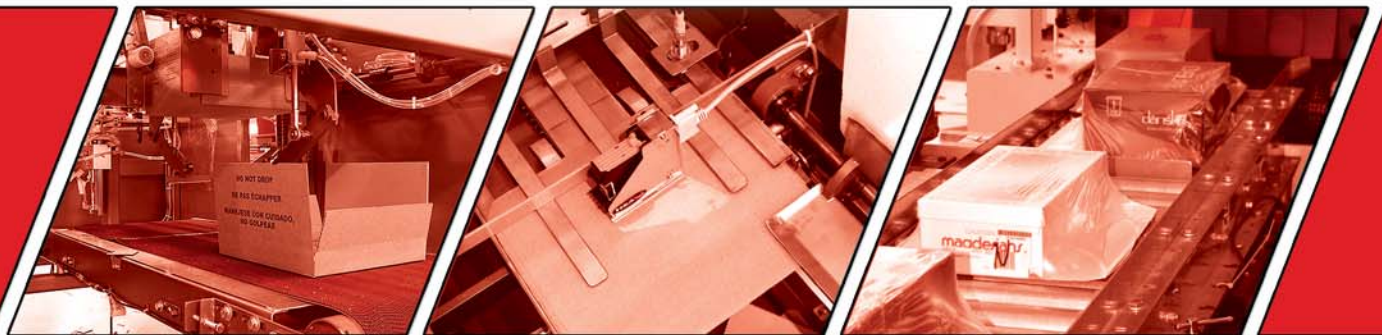


# AGI

TM

IN-MOTION PACKAGING SYSTEMS

AN ARPAC AND GRSI COMPANY



*PACKAGING INTEGRATION MADE EASY™*

# IN-MOTION PACKAGING SYSTEMS

## PACKAGING SOLUTIONS FOR:

- CARTONS
  - BAGS
  - FLATS
  - ENVELOPES
- AND MORE**

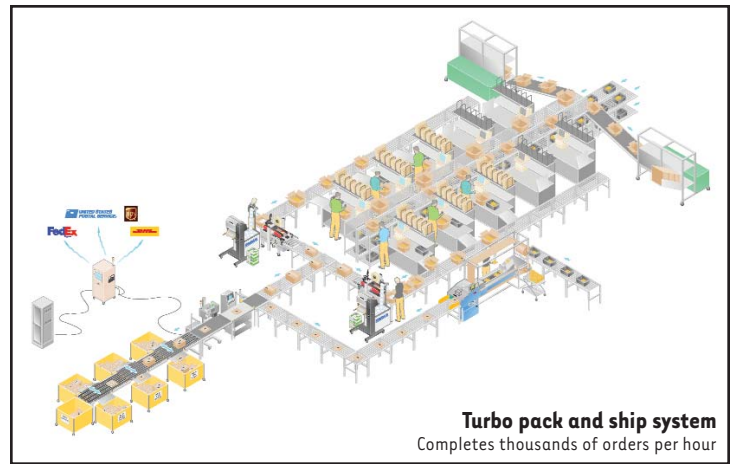
## GOAL:

- SPEED
- ACCURACY
- QUALITY
- SUPPORT

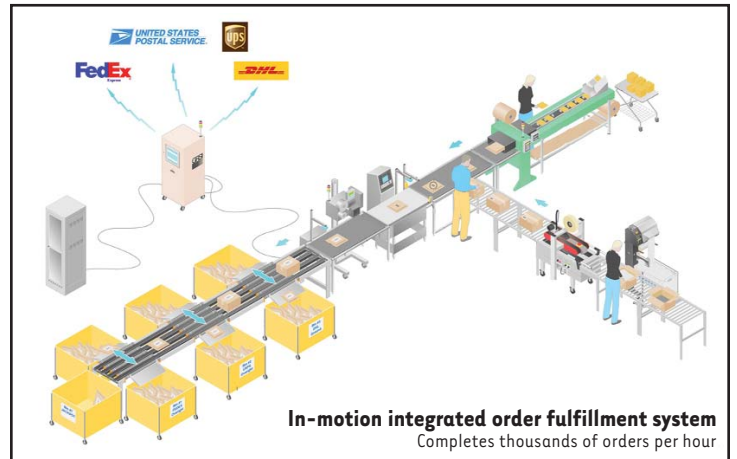
AGI (AG Integrators, LLC) is the strategic partnership between ARPAC and GRSI. AGI supplies its clients with innovative and advanced in-motion packaging systems. The goal is to be the complete resource in meeting and exceeding the supply chain needs of the retail, manufacturing and internet retail market. ARPAC provides AGI with packaging equipment manufacturing and engineering experience; GRSI provides packaging integration and warehouse control system software and services. AGI automates operations including package formation, product and pack list insertion, labeling, manifesting, sorting and more.

## AGI specializes in advanced in-motion packaging systems

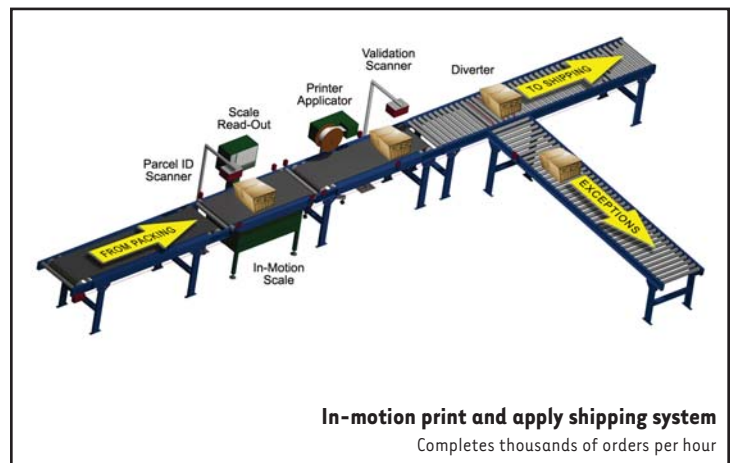
- Total systems integration with **FastTrak® P.I.** software
- “Best in class” machinery options to suit the customer's needs
- Single-point of contact from start to finish
- Around-the-clock customer support team - Best in class!
- Creative package designs for hard goods, soft goods and gift packaging with full in-motion automation



**Turbo pack and ship system**  
Completes thousands of orders per hour



**In-motion integrated order fulfillment system**  
Completes thousands of orders per hour



**In-motion print and apply shipping system**  
Completes thousands of orders per hour

## EXPERIENCE

- |                                 |                     |                                |
|---------------------------------|---------------------|--------------------------------|
| • Apparel, shoe and accessory   | • Mass merchant     | • Finance and accounting       |
| • Jewelry                       | • Office supply     | • Gifts                        |
| • Book, catalog and magazine    | • Toy and hobby     | • Food, drink and convenience  |
| • CD, DVD and video game        | • Automotive        | • Medical equipment and supply |
| • Computer and electronic       | • Drug and chemical | • Novelty                      |
| • Hardware and home improvement | • Department store  | • Sporting goods               |

# ADVANCED IN-MOTION PACKAGING SYSTEMS

## SOLUTIONS FOR:

- CARTONS
  - BAGS
  - FLATS
  - COLD SEAL
  - ENVELOPES
- AND MORE



- DROP STATION
- PAD LPN BARCODE IS SCANNED



- SCAN TUNNEL
- PAD LPN BARCODE IS SCANNED

- SHRINK WRAPPER
- PRODUCT IS SECURED TO PAD



- PAD DISPENSER
- PRINTS UNIQUE ID (LPN) BARCODE ON EACH PAD

EXCEPTION LANE

ORDER INDUCTION

PACKAGING LINE  
COMPUTER

INCOMING ORDERS

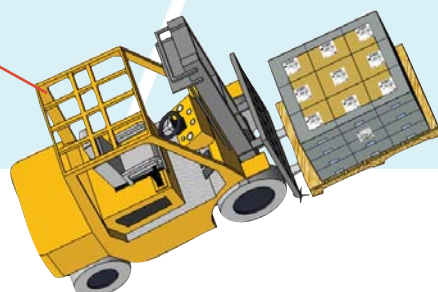
- DIFFERENT SIZE CARTONS USED FOR VARIOUS SIZE PRODUCTS



COMPLETED PALLET TRANSFERRED TO SHIPPING STATION

- SHIPPING/BARCODE LABEL PRINTER APPLICATOR
- RFID TAG INSERTION

SHIPPING LABEL VERIFICATION SCANNER

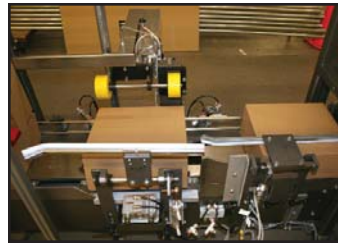




**AUTOMATED PACK LIST  
PRINTER AND INSERTER**



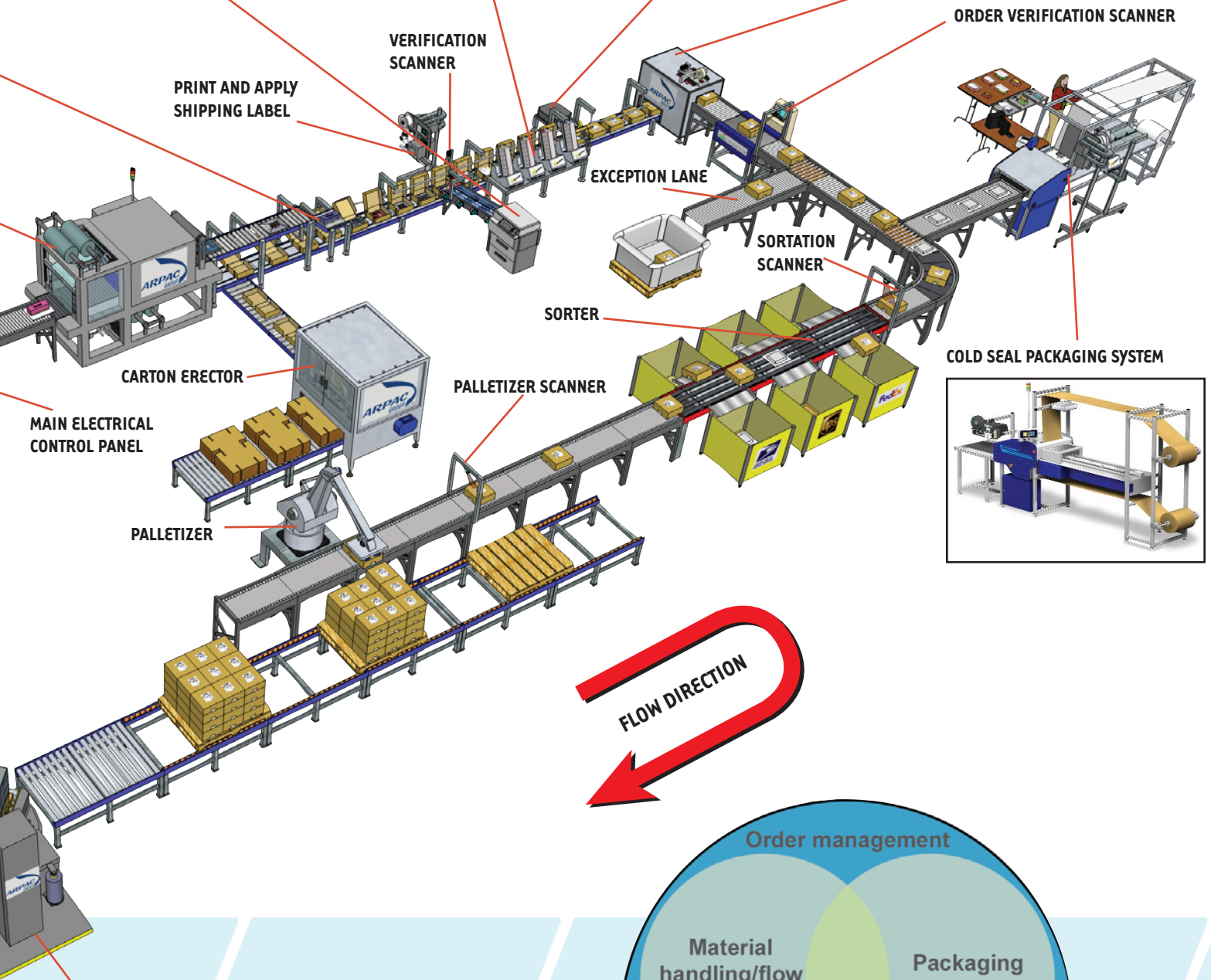
**DOCUMENT INSERTERS**



**CARTON CLOSER**



**CARTON TAPER**



**PRINT AND APPLY  
SHIPPING LABEL**

**VERIFICATION  
SCANNER**

**EXCEPTION LANE**

**ORDER VERIFICATION SCANNER**

**SORTATION  
SCANNER**

**SORTER**

**COLD SEAL PACKAGING SYSTEM**

**CARTON ERECTOR**

**PALLETIZER SCANNER**

**MAIN ELECTRICAL  
CONTROL PANEL**

**PALLETIZER**

**STRETCH WRAPPER**

**FLOW DIRECTION**



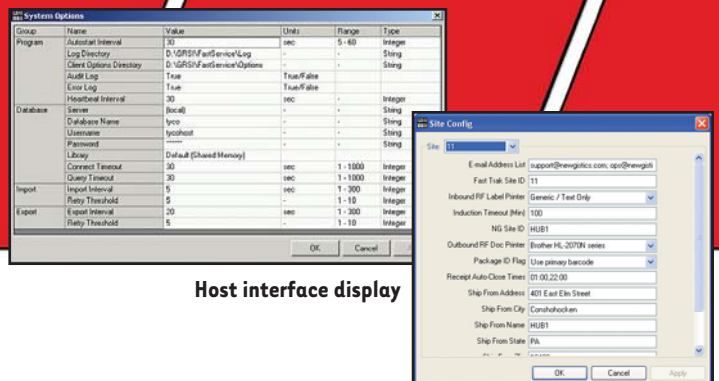
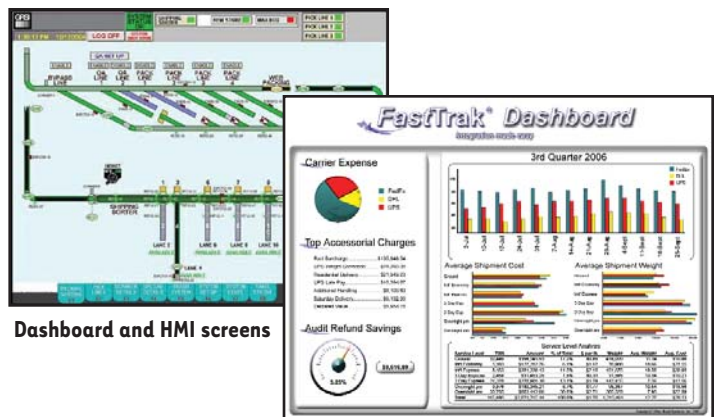
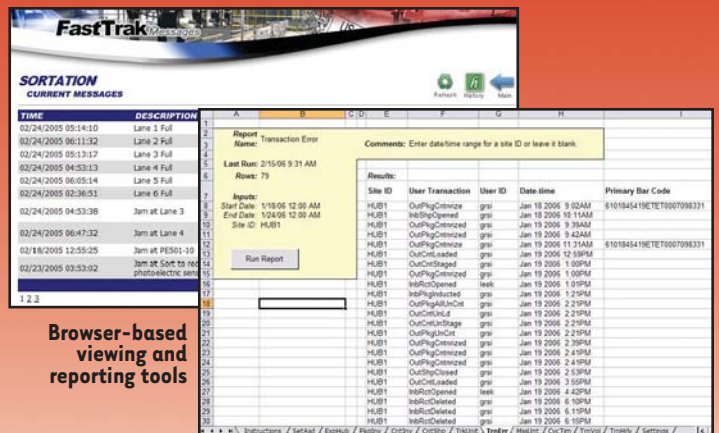
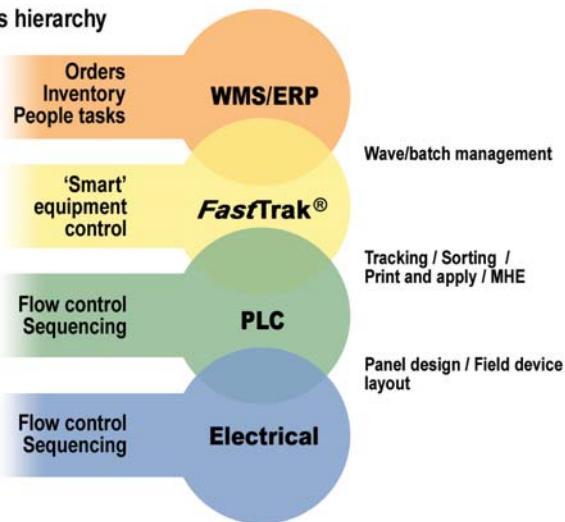
# PACKAGING INTEGRATION

**FastTrak® P.I.** integrates all packaging equipment and subsystems into a streamlined unit. The software also connects this unit to any new or existing WMS or ERP host system to provide enhanced functionality and system controls. Features include dashboard diagnostic troubleshooting, maintenance tools and more. The core module coordinates all host information, warehouse activities, and transfers appropriate data to each of its user-friendly utilities. The main screen, dashboards and HMIs display all essential warehouse activities.

## FastTrak® P.I. software suite

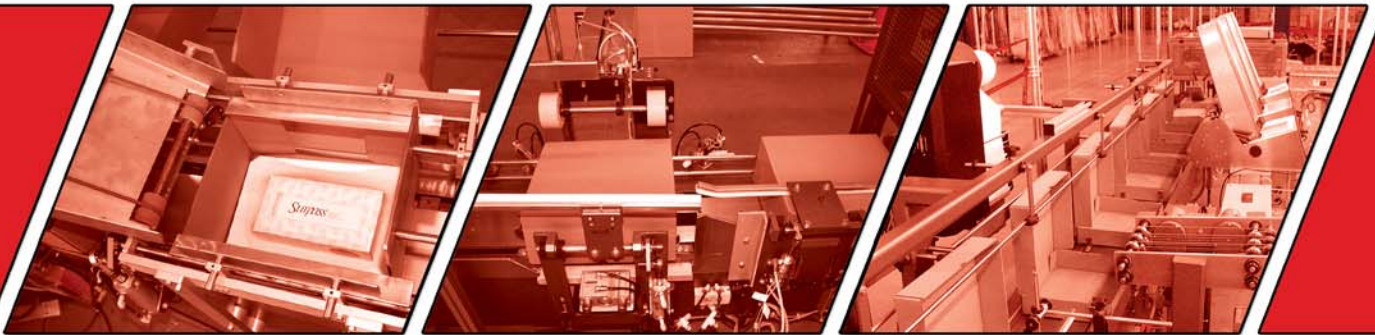
- Integrates all packaging and material handling equipment/subsystems
- Single-port connectivity to any WMS or ERP host system
- Allows equipment to run at it's maximum capacity
- Displays graphical HMI and dashboard screens
- Displays browser-based, real-time system status
- Controls and manages all warehouse activities
- Automates labor intensive activities
- Utilizes the latest Microsoft .NET software platform
- Shows personnel performance
- Includes custom system alert notifications

### Controls hierarchy



## INTEGRATION EXPERTISE

Shrink bundlers	Document inserters and collators
Label printer/applicators	Void fill machines
Print registered shrink systems	Scanners and cameras
Conveyor systems	PLC programming
Sorters and diverters	ERP host systems
Shrink tunnels	Warehouse management systems
Horizontal shrink wrappers	Scales
Tray, case and box erectors	Cohesive packaging machines
Tray and case packers	RFID systems
Stretch wrappers	Pocket labeling
Stretch hooders	Green packaging
Pad dispensers	Covert technology
Bag and pouch feeders	Smart packaging software
Banders	Void reduction systems
Palletizers and depalletizers	HMI's
Tapers	Carousels
Scanning and verification stations	Carton closers



AG Integrators, LLC  
401 East Elm Street  
Conshohocken, PA 19428  
Phone: 610-397-1050  
Fax: 610-397-1650  
[www.agintegrators.com](http://www.agintegrators.com)

